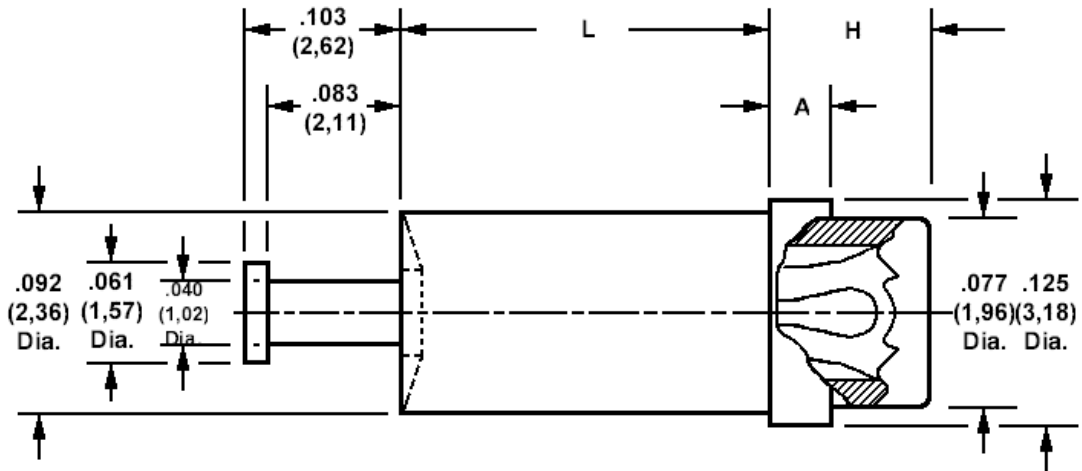


## 450-3375 Swage mount socket, for .025 (0,64) diameter pins

Recommended mounting hole .094 (2,39) + .002 (0,05) - .001 (0,03)



Min hole depth .140 (3,58)

**How to order code**  
**450-3375-YY-XX-00**  
 Basic Part No XX = Finish

DIMENSIONS				
Dash No	L	Board Thickness	A	H
-02	.094 (2,39)	.061 (1,57)	.061 (1,57)	.105 (2,69)
-03	.125 (3,18)	.094 (2,39)	.031 (0,79)	.075 (1,91)
-04	.156 (3,96)	.125 (3,18)	.031 (0,79)	.075 (1,91)
-05	.218 (5,56)	.187 (4,75)	.031 (0,79)	.075 (1,91)

MATERIALS				
Component	Material	Finish(-03)	Finish(-04)	Finish(-06)
Body	Brass	Gold over Nickel	Tin	Tin
Spring	Beryllium copper	Gold over Nickel	Tin	Gold over Nickel

TOOLING	
<b>Recommended Swaging Tools:-</b>	
Anvil	435-6446-01-00-00
Punch	435-6654-01-00-00